

ROE

CREATIVE DISPLAY



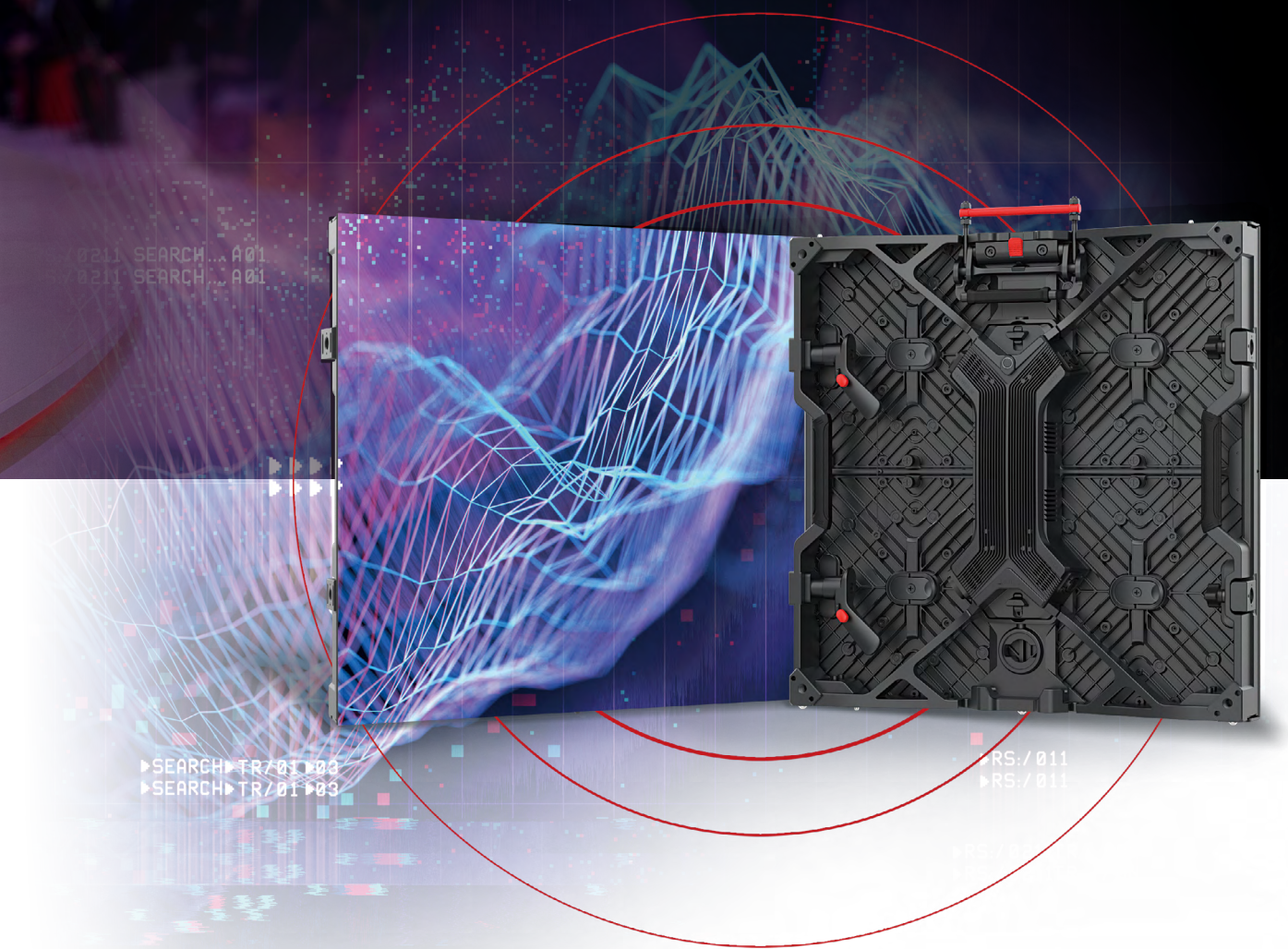
Ruby 1.2 / 1.5 / 2.3

Get Ready for the Next Generation

INDOOR LED PANELS

Simply Stunning

Only the best is good enough. Surpassing existing technology, ROE Visual has developed the 4in1 miniLED in a 1.2, 2.3 and 1.5 pixel pitch, exclusively available for Ruby. Stronger, less reflection and more contrast due to an optimized black body, the resulting colors are striking.

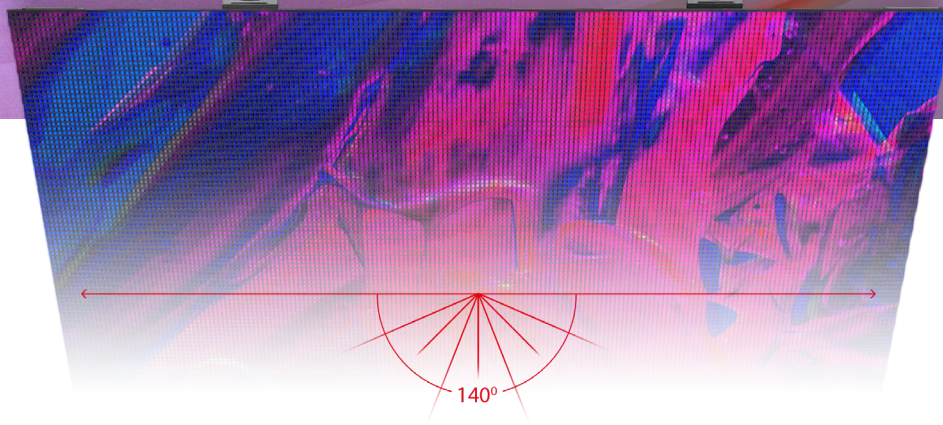


Advanced LED Technology for an Incredible Viewing Experience

How to comprise the latest technology into an advanced LED panel and translate that to an outstanding viewing experience? ROE Visual has done just that. The Ruby LED panels are a new generation of LED panels equipped with features that are beneficial from build to performance.



Your story, Visualised better than ever before



Cutting-Edge Common Cathode Technology

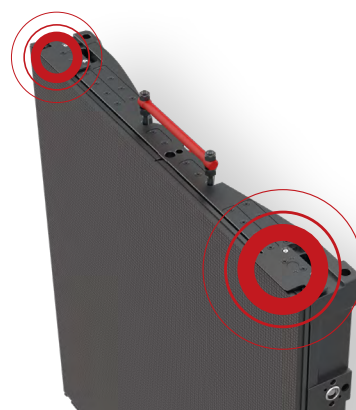
With its high-brightness LED performance, the Ruby panels give an excellent visual performance for both direct viewing and in-camera visuals. Using the common cathode technology, power consumption is reduced by 20-25%, resulting in optimum heat-dissipation. Due to this technology more brightness and less color differences in the LEDs makes the visual performance stable and brilliant.

Automatic Edge Protection

The Ruby LED panels incorporate automatic edge-protection on each panel corner, thereby reducing pixel damage drastically. The magnet-assisted assembly and vertically operated side locks with Z-axis correction make assembly quick, accurate and easy.

Unprecedented Viewing Angle

The absence of any mask enables an unprecedented wide viewing angle. With its high-brightness LED performance, the Ruby panels give an excellent visual performance for both direct viewing and in-camera visuals.



Easy Maintenance

With both front and rear module service, the Ruby panels are easy to maintain. The integrated PSU and Hub unit make repair and replacement of spare parts easy and cost-effective.

The New Standard for Stunning Visuals

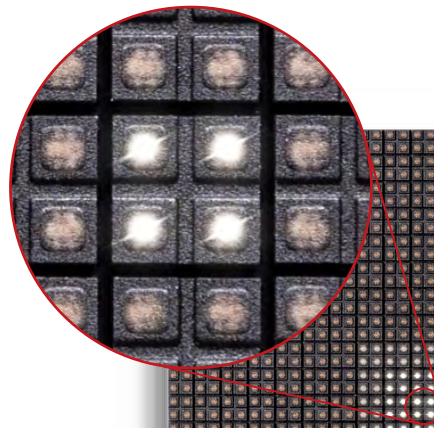


A Multitude of Shades of Black Coming Alive

With its improved grayscales Ruby offers precision imagery, showing black in endless scales and fluent gradients.

Details that Matter. Individual LED Lens

Each 4in1 LED supports 4 individual lenses instead of on large one. This results in a remarkable LED performance, due to reduced glare and leads to a perfect on-camera performance of the LED screens. The enhanced black body between the individual LEDs creates more contrast and guarantees optimum brightness.





HDR supported
LED technology

HDR

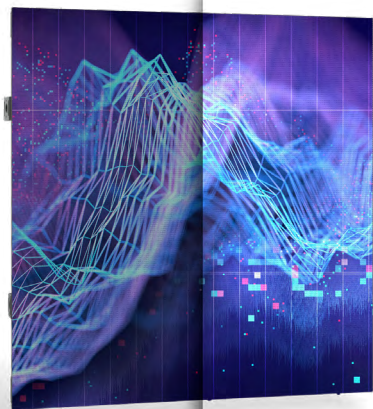
Common cathode
technology for
energy saving



Modular design PSU
and HUB combined
in one unit



High-brightness,
1500 nits



Front and rear
module service



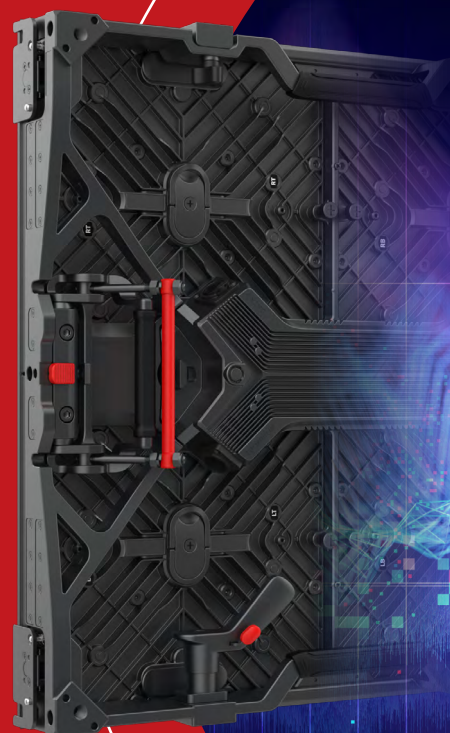
Unique strong
4in1 LEDs



HDR. True Colors

Sporting advanced driver ICs
and LEDs with large color space,
Ruby is fully HDR adaptive.
Adding excellent color depth and
great greyscales to your visuals.

Automatic edge-
protection



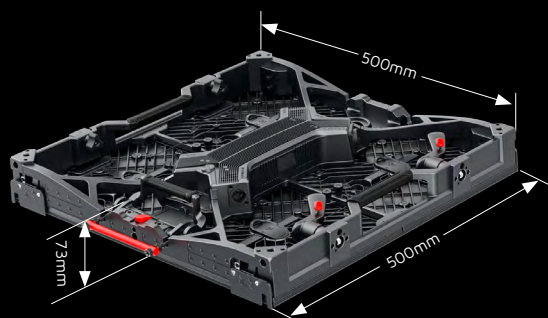
Specifications

| Ruby | RB1.2 | RB1.5 | RB2.3 |
|---------------------------------|---|---|---|
| Pixel Pitch | 1.25mm | 1.56mm | 2.31mm |
| Max Brightness Calibrated | 800nits | 800nits | 1500nits |
| Panel Dimension | 500mm x 500mm x 73mm 19.7" x 19.7" x 2.87" | 500mm x 500mm x 73mm 19.7" x 19.7" x 2.87" | 500mm x 500mm x 73mm 19.7" x 19.7" x 2.87" |
| Panel Resolution (H x V) | 400 x 400 | 320 x 320 | 216 x 216 |
| Panel Weight | 8.24kg; 18.17lbs | 8.16kg; 17.99lbs | 8.16kg; 17.99lbs |
| Power Consumption Max / Average | 210W / 105W | 210W / 105W | 180W / 90W |
| BTU Max / Average | 715 / 330 | 715 / 330 | 615 / 280 |
| Transparency | Solid | Solid | Solid |
| Serviceability | Front / Rear | Front / Rear | Front / Rear |
| Curving (Concave & Convex) *1 | Concave 5°-Convex 3° | Concave 5°-Convex 3° | Concave 5°-Convex 3° |
| Max. Hanging (panels) *2 | 20 | 20 | 20 |
| Max. Stacking (panels) *3 | 12 | 12 | 12 |
| LED Configuration | 4 in 1 common cathode | 4 in 1 common cathode | 4 in 1 common cathode |
| Viewing Angle Horizontal | 140° | 140° | 140° |
| Viewing Angle Vertical | 140° | 140° | 140° |
| Scan Ratio | 1/20 | 1/16 | 1/12 |
| Refresh Rate | 7680Hz | 3840Hz | 3840Hz |
| Gray Scale | 16bit | 14bit | 15bit |
| Frame Material | Magnesium Alloy | Magnesium Alloy | Magnesium Alloy |
| Processing Platform | Megapixel / Brompton | Megapixel / Brompton | Megapixel / Brompton |
| Operational Temp / Humidity | -20°~45°C, 10~90%RH -4°~113°F, 10~90%RH | -20°~45°C, 10~90%RH -4°~113°F, 10~90%RH | -20°~45°C, 10~90%RH -4°~113°F, 10~90%RH |
| Storage Temp / Humidity | -40°~60°C, 10~90%RH -40°~140°F, 10~90%RH | -40°~60°C, 10~90%RH -40°~140°F, 10~90%RH | -40°~60°C, 10~90%RH -40°~140°F, 10~90%RH |
| IP Rating | Indoor | Indoor | Indoor |
| Certifications | CE, ETL, FCC, RoHS | CE, ETL, FCC, RoHS, WEEE | CE, ETL, FCC, RoHS, WEEE |
| 3D Ready | Yes | Yes | Yes |

*Notes: The Specifications are for reference, actual values may vary.

1. Convex curving ability only applies to custom tiles.
2. The max. hanging amount is only valid when the ROE Visual hanging bar and complementary accessories are used and in an indoor situation, safety factor is 8. No climbing is allowed.
3. The max. stacking amount is only valid when the ROE Visual stacking system and complementary accessories are used, sufficient ballast is applied and in an indoor situation. No climbing is allowed.

Dimensions



www.roevisual.com

ROE China | ROE US | ROE EU | ROE UK | ROE JP | ROE ME | ROE AUS

roe@roevisual.com